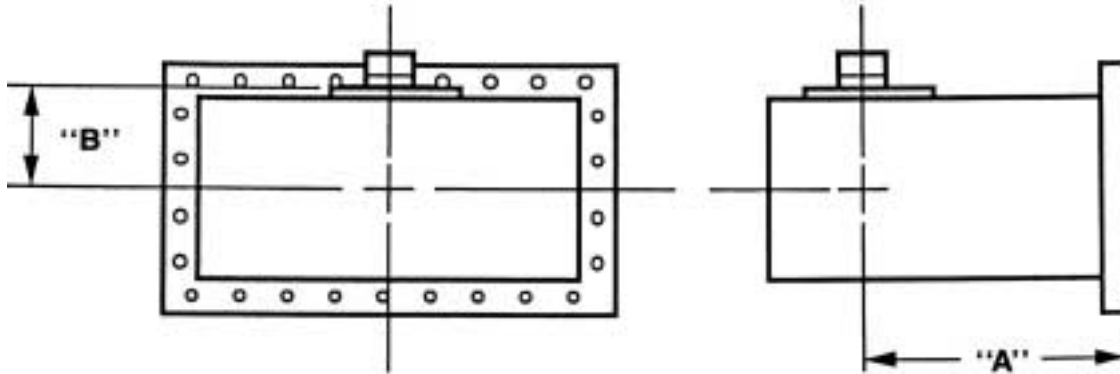




COAXIAL TO WAVEGUIDE TRANSITIONS WX SERIES

DATA
SHEET
No.T88A

- WIDE RANGE OF CONNECTORS
- LOW VSWR



SPECIFICATIONS

COAXIAL SIZE	PART NUMBER				"A"
	WR 1800	WR 1500	WR 1150	WR 975	
7/8-50 OHM	WX810-XXX	WX510-XXX	WX110-XXX	WX910-XXX	6.00
1 5/8-50 OHM	WX820-XXX	WX520-XXX	WX120-XXX	WX920-XXX	6.00
3 1/8-50 OHM	WX830-XXX	WX530-XXX	WX130-XXX	WX930-XXX	6.00
4 1/16-50 OHM	WX840-XXX	WX540-XXX	WX140-XXX	WX940-XXX	6.00
6 1/8-50 OHM	WX860-XXX	WX560-XXX	WX160-XXX	WX960-XXX	6.00
6 1/8-50 OHM	WX865-XXX	WX565-XXX	WX165-XXX	WX965-XXX	6.00
8 3/16-50 OHM	WX885-XXX	WX585-XXX	WX185-XXX		12.00
9 3/16-50 OHM	WX890-XXX	WX590-XXX			12.00
9 3/16-50 OHM	WX895-XXX	WX595-XXX			12.00
"B"	5.50	4.75	3.88	3.44	

XXX DESIGNATES CENTER FREQUENCY MHz
OXX DESIGNATES TV CHANNEL

POWER HANDLING:	Compatibility to coaxial line
VSWR:	1.035:1 for any 2% band 1.10:1 for any 10% band
COAXIAL PORT:	will mate with EIA female
MATERIAL:	outer 6061-T6 aluminum inner copper-silver plated brass
FINISH:	outer 6061-T6 aluminum (chromate conversion)

Data subject to change without notice



MICROWAVE ENGINEERING CORPORATION
1551 OSGOOD STREET, NORTH ANDOVER, MA 01845 • TEL (978) 685-2776 • FAX (978) 975-4363

Website: www.microwaveeng.com, Email: sales@microwaveeng.com