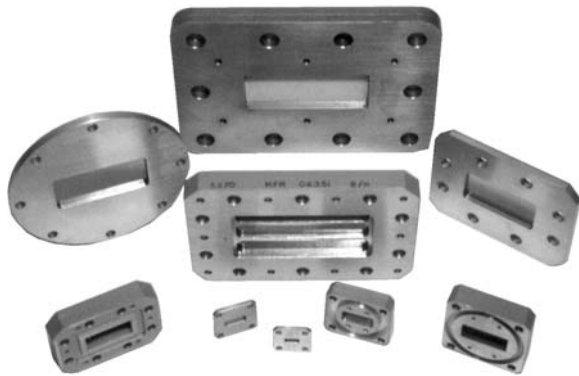




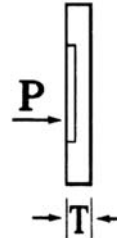
RECTANGULAR WAVEGUIDE PRESSURE WINDOWS 270 SERIES

**DATA
SHEET
No. T87A**

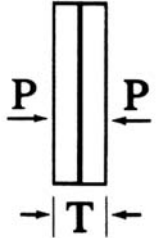
- LOW VSWR
- HIGHPOWER



**STYLE 1
UNIDIRECTIONAL**



**STYLE 2
OMNIDIRECTIONAL**



DESCRIPTION

MEC Rectangular Waveguide Pressure Windows offer low Reflection Loss over complete waveguide bands. Working pressure is 30 lbs. Typically they have a gasket groove on one side and conform to standard flange dimensions. Clearance holes are supplied for installation between flanges. Windows may be manufactured out of aluminum or brass.

SPECIFICATIONS

| MODEL NO. | Waveguide Size | FLANGE TYPE | STYLE | T (INCHES) |
|-----------|----------------|-------------|-------|------------|
| S270 | WR-284 | UG-F/G | 2 | 1/2 |
| | | CPR-F | 2 | 1/2 |
| | | CPR-G | 2 | 1/2 |
| | | CMR | 2 | 1/2 |
| B270 | WR-229 | CPR-F | 1 | 1/4 |
| | | CPR-G | 2 | 3/8 |
| | | CMR | 2 | 3/8 |
| G270 | WR-187 | UG-F | 1 | 3/16 |
| | | UG-G | 2 | 3/8 |
| | | CPR-F | 1 | 3/16 |
| | | CPR-G | 2 | 3/8 |
| | | CMR | 2 | 3/8 |
| D270 | WR-159 | UG-F | 1 | 3/16 |
| | | UG-G | 2 | 3/8 |
| | | CPR-F | 1 | 3/16 |
| | | CPR-G | 2 | 3/8 |
| | | CMR | 2 | 3/8 |
| J270 | WR-137 | UG-F | 1 | 3/16 |
| | | UG-G | 2 | 3/8 |
| | | CPR-F | 1 | 3/16 |
| | | CPR-G | 2 | 3/8 |
| | | CMR | 2 | 3/8 |

| MODEL NO. | Waveguide Size | FLANGE TYPE | STYLE | T (INCHES) |
|-----------|----------------|-------------|-------|------------|
| H270 | WR-112 | UG-F | 1 | 3/16 |
| | | UG-G | 2 | 3/8 |
| | | CPR-F | 1 | 3/16 |
| | | CPR-G | 2 | 3/8 |
| | | CMR | 2 | 3/8 |
| W270 | WR-102 | UG-F | 1 | 3/16 |
| | | UG-G | 2 | 3/8 |
| X270 | WR-90 | UG-F | 1 | 3/16 |
| | | UG-G | 2 | 3/8 |
| | | CPR-F | 1 | 3/16 |
| | | CPR-G | 2 | 3/8 |
| | | CMR | 2 | 3/8 |
| M270 | WR-75 | UG-F | 1 | 3/16 |
| | | UG-G | 2 | 3/8 |
| | | CPR-F | 1 | 3/16 |
| | | CPR-G | 2 | 3/8 |
| P270 | WR-62 | UG-F | 1 | 3/16 |
| | | UG-G | 2 | 5/16 |
| N270 | WR-51 | UG-F | 1 | 3/16 |
| | | UG-G | 2 | 5/16 |
| K270 | WR-42 | UG-F | 1 | 1/8 |
| | | UG-G | 2 | 1/4 |
| Y270 | WR-34 | UG-F | 1 | 1/8 |
| | | UG-G | 2 | 1/4 |
| A270 | WR-28 | UG-F | 1 | 1/8 |
| | | UG-G | 2 | 1/4 |

ORDERING INFORMATION

- (1) Ordering by model No., flange type, and style.
- (2) Call for information about higher power and special applications

Data subject to change without notice



MICROWAVE ENGINEERING CORPORATION

1551 STREET, NORTH ANDOVER, MA 01845 • TEL (978) 685-2776 • FAX (978) 975-4363 • Website: <http://www.microwaveeng.com/> • Email: sales@microwaveeng.com