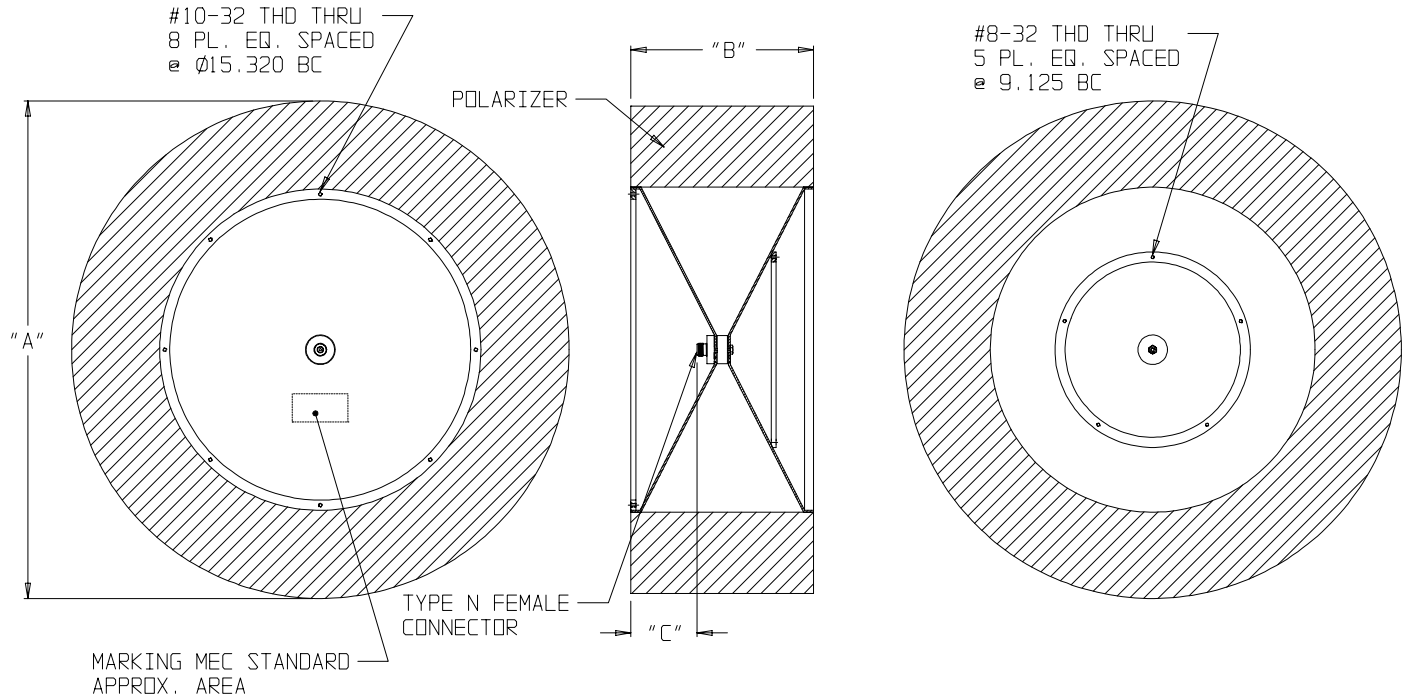




# BICONICAL ANTENNAS (C390-306)

DATA  
SHEET  
No.T164



## SPECIFICATIONS:

<b>Model Number</b>	<b>C390-306</b>	
<b>Frequency</b>	<b>0.5 - 2 GHz</b>	
<b>Gain</b>	<b>-2 to 5 dBiL</b>	
<b>3-dB Beamwidth</b>	<b>30° MIN</b>	
<b>CW Power</b>	<b>50 watts</b>	
<b>Polarization</b>	<b>SLANT 45° LINEAR</b>	
<b>Maximum VSWR</b>	<b>2:1</b>	
<b>Input Connector</b>	<b>TYPE N FEMALE</b>	
<b>Weight (Max)</b>	<b>8.5 lb</b>	
<b>DIMENSIONS</b>	<b>"A"</b>	<b>24.50" MAX</b>
	<b>"B"</b>	<b>9.00"</b>
	<b>"C"</b>	<b>3.24"</b>

Data subject to change without notice



MICROWAVE ENGINEERING CORPORATION  
1551 OSGOOD STREET, NORTH ANDOVER, MA 01845 • TEL (978) 685-2776 • FAX (978) 975-4363

Website: [www.microwaveeng.com](http://www.microwaveeng.com), Email: [sales@microwaveeng.com](mailto:sales@microwaveeng.com)