



WAVEGUIDE VARIABLE ATTENUATORS

60V Series

DATA SHEET
No. T150

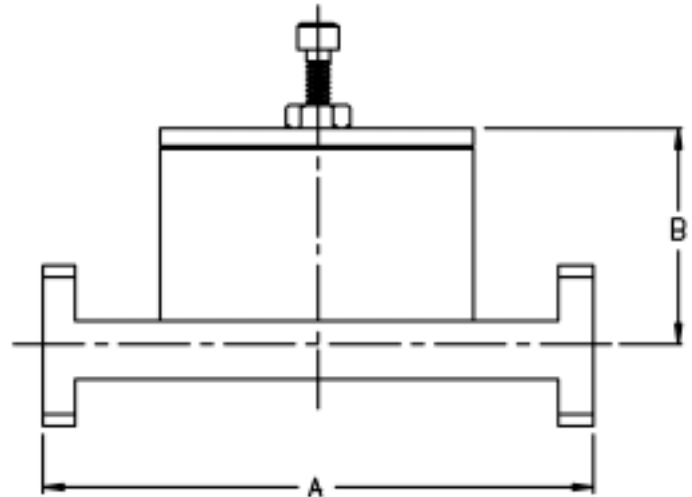
- BROAD ATTENUATION RANGE
- LOW LOSS
- LOW VSWR
- FULL BAND

DESCRIPTION

MEC's 60V series of waveguide variable attenuators are available in attenuation ranges of 0-40 dB. Narrow or broad band versions may be ordered. Full band flatness is as low as ± 0.5 dB from 0-10 dB attenuation and ± 0.7 dB from 10-20 dB attenuation. Full band flatness degrades at higher attenuation levels, however narrower bandwidths can hold ± 0.5 dB flatness up to 40 dB attenuation.

Calibrated vernier drives are available upon request. A locking screw is standard on the drive mechanism. These components may be converted from variable to a fixed version by simply switching the attenuator block.

Our high precision machining guarantees unit to unit repeatability within 0.1 dB. The table below is a representative sample of MEC's available designs of variable attenuators. Contact MEC with your specific requirements. Our engineering staff will be glad to discuss your needs.



MODEL NUMBER	W/G SIZE	FREQ. (GHz)	ATTENUATION (dB)	FLATNESS (dB)	VSWR	INSERTION LOSS (dB)	A (Inches)	B (Inches)
X60-V	WR90	8.2-12.4	0-20	0-10 dB Atten. ± 1.0 10-20 dB Atten. ± 3.0	1.1:1	0.2 Max	10	1.34
P60-118	WR62	12.4-18	0-40	0-10 dB Atten. ± 0.5 10-20 dB Atten. ± 0.7 20-40 dB Atten. ± 2.0	1.1:1	0.2 Max	3.9	2.2
Y60-V	WR34	26-33	0-20	0-10 dB Atten. ± 0.5 10-20 dB Atten. ± 0.7	1.1:1	0.2 Max	3.0	1.2

Data subject to change without notice



MICROWAVE ENGINEERING CORPORATION
1551 OSGOOD STREET, NORTH ANDOVER, MA 01845 • TEL (978) 685-2776 • FAX (978) 975-4363
Website: www.microwaveeng.com, Email: sales@microwaveeng.com