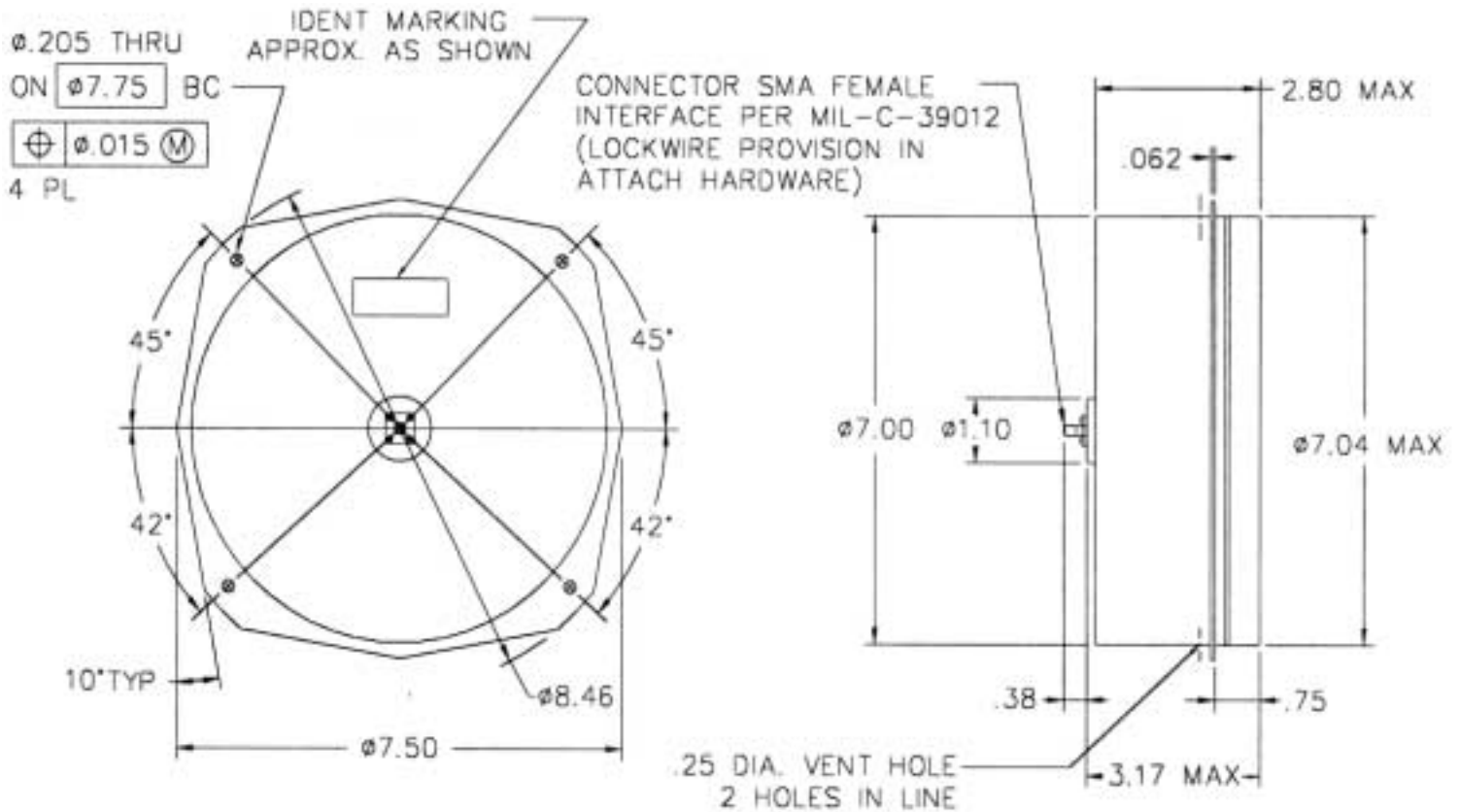




CAVITY BACKED SPIRAL ANTENNAS (2040, 2040-1)

DATA SHEET
No.T144



SPECIFICATIONS:

Model Numbers	2040, 2040-1
Frequency	0.5-2 GHz
Gain	-12 to 1 dBiL
Nominal 3-dB Beamwidth	80 °
Beam Squint	< 6 °
CW Power	10 watts
Polarization	LCP
Maximum Axial Ratio	1.5 dB
Maximum VSWR	2.3:1
Input Connector	SMA
Weight (Max)	1 lb 6 oz



Note: Model 2040 has rain erosion resistant coating on radome, 2040-1 has no finish on radome.

Data subject to change without notice



MICROWAVE ENGINEERING CORPORATION

1551 OSGOOD STREET, NORTH ANDOVER, MA 01845 • TEL (978) 685-2776 • FAX (978) 975-4363

Website: www.microwaveeng.com, Email: sales@microwaveeng.com