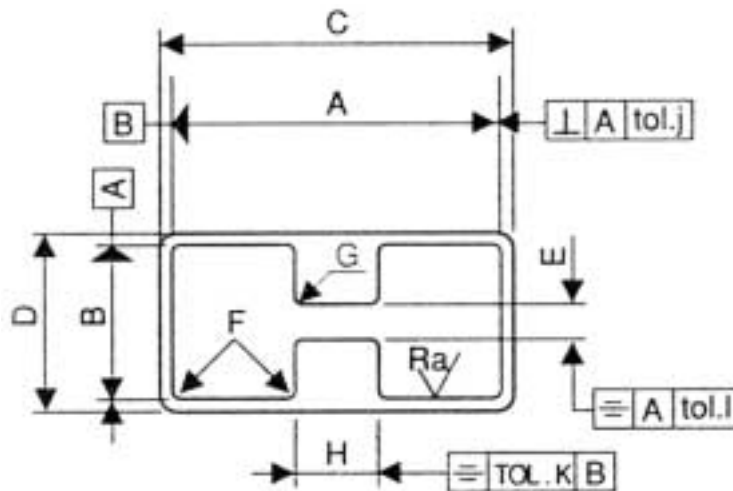




# STANDARD DOUBLE-RIDGE WAVEGUIDE

DATA  
SHEET  
No. T111

Waveguide size	Dimensions										(max.)	(±10%)					Surface finish (Ra) μ inch/μm	
	A	B	C	D	E	F	G	H	J	K								L
	Inch/mm	Inch/mm	Inch/mm	Inch/mm	Inch/mm													
<b>WRD200</b>	2.59 ± .004 65.79 ± .001	1.205 ± .004 30.61 ± .100	2.750 ± .004 69.85 ± .100	1.365 ± .004 34.67 ± .100	.512 ± .002 13.00 ± .050	.050 1.27	.102 2.59	.648 ± .002 16.46 ± .050	.004 .100	.002 .050	.002 .050	25 1,0						
<b>WRD350</b>	1.480 ± .003 37.59 ± .080	.688 ± .003 17.48 ± .080	1.608 ± .004 40.84 ± .100	.816 ± .004 20.73 ± .100	.2920 ± .002 7.471 ± .050	.030 .760	.058 1.47	.3700 ± .002 9.398 ± .050	.003 .080	.002 .050	.002 .050	25 1,0						
<b>WRD475</b>	1.090 ± .003 27.69 ± .080	.506 ± .003 12.85 ± .080	1.190 ± .003 30.23 ± .080	.606 ± .003 15.39 ± .080	.215 ± .002 5.46 ± .050	.030 .760	.043 1.09	.272 ± .002 6.91 ± .050	.003 .080	.002 .050	.002 .050	25 1,0						
<b>DR19</b>	1.025 ± .003 26.04 ± .080	.475 ± .003 12.06 ± .080	1.125 ± .005 28.58 ± .130	.575 ± .005 14.60 ± .130	.191 ± .003 4.85 ± .080	.030 .760	.062 1.57	.256 ± .003 6.50 ± .080	.003 .080	.003 .080	.003 .080	25 1,0						
<b>WRD500</b>	.752 ± .003 19.10 ± .080	.323 ± .003 8.20 ± .080	.852 ± .004 21.64 ± .100	.423 ± .004 10.74 ± .100	.063 ± .002 1.60 ± .050	.020 .510	.013 .330	.188 ± .002 4.78 ± .050	.003 .080	.002 .050	.002 .050	25 1,0						
<b>WRD580</b>	.780 ± .003 19.81 ± .080	.370 ± .003 9.398 ± .080	.880 ± .005 22.352 ± .100	.467 ± .005 11.86 ± .100	.120 ± .001 3.048 ± .025	.020 .510	.043 1.09	.200 ± .001 5.08 ± .025	.003 .080	.002 .050	.002 .050	25 1,0						
<b>WRD650</b>	.720 ± .003 18.29 ± .064	.321 ± .003 8.13 ± .064	.820 ± .003 20.83 ± .080	.421 ± .003 10.67 ± .080	.101 ± .001 2.57 ± .025	.020 .510	.022 .510	.173 ± .001 4.39 ± .025	.003 .080	.002 .050	.002 .050	25 1,0						
<b>WRD750</b>	.691 ± .003 17.55 ± .080	.321 ± .003 8.15 ± .080	.791 ± .003 20.09 ± .080	.412 ± .003 10.69 ± .080	.136 ± .002 3.45 ± .050	.020 .510	.027 .690	.173 ± .002 4.39 ± .050	.003 .080	.002 .050	.002 .050	25 1,0						
<b>WRD110</b>	.471 ± .003 11.96 ± .080	.219 ± .003 5.56 ± .080	.551 ± .003 14.00 ± .080	.299 ± .003 7.59 ± .080	.0930 ± .002 2.362 ± .050	.015 .380	.019 .480	.118 ± .002 2.997 ± .050	.003 .080	.002 .050	.002 .050	25 1,0						
<b>WRD180</b>	.288 ± .003 7.32 ± .080	.134 ± .003 3.40 ± .080	.368 ± .003 9.35 ± .080	.214 ± .003 5.44 ± .080	.0570 ± .002 1.448 ± .050	.015 .380	.011 .280	0.720 ± .002 1.829 ± .050	.003 .080	.002 .050	.002 .050	25 1,0						



Data subject to change without notice



MICROWAVE ENGINEERING CORPORATION  
1551 OSGOOD STREET, NORTH ANDOVER, MA 01845 • TEL (978) 685-2776 • FAX (978) 975-4363

Website: [www.microwaveeng.com](http://www.microwaveeng.com), Email: [sales@microwaveeng.com](mailto:sales@microwaveeng.com)